

Turvatikas Safety Ladder, Climbing Carriage No. 930 inspection instructions

Turvatikas Safety Ladder fall protection products complying to the definition of the EN353-1:2014+A1:2017 standard may only be inspected by a certified inspector authorized by Eltel Networks Oy.

While inspecting the Turvatikas Safety Ladder Climbing Carriage No. 930, the instructions given in the standard EN 365:2004+AC:2006 must be followed.

The standard EN 365:2004 + AC:2006 defines the minimum markings that the Climbing Carriage 930 must have in order to meet the requirements set by the standard. The same standard also defines the minimum requirements for the information needed to be recorded from the inspection.

Please find the detailed instructions below for performing the inspection:

The authorization to inspect Turvatikas Safety Ladder products

The authorization is obtained by passing the Turvatikas Safety Ladder inspector's exam. The Turvatikas Safety Ladder inspector's certificate is free and is valid for three years.



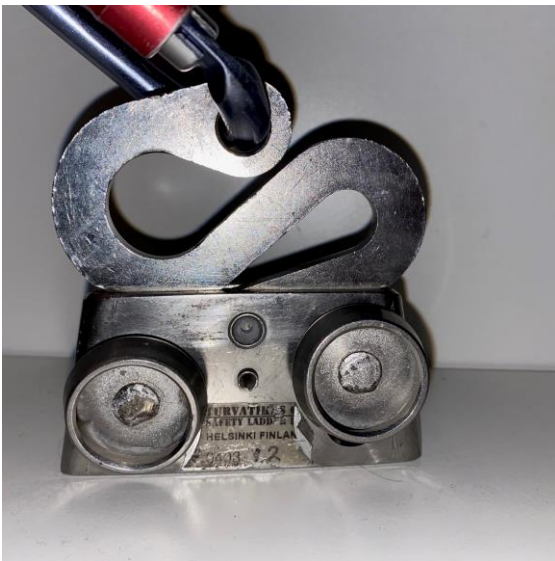
It is the responsibility of the owner/holder of the climbing carriage to ensure that the person who inspects the climbing carriage has a valid Turvatikas Safety Ladder Inspector certificate.

Inspection of the Climbing Carriage No. 930

1. The standard requirements for markings on the Climbing Carriage

The following markings must be found on the Climbing Carriage:

- Identification information, e.g. manufacturer's name, supplier's name or trademark.
- Manufacturer's production batch or serial number or other means of tracking.
- Model and type or identifier.
- The number and year of the document to which the device conforms.
- Image or other marking to indicate that the user needs to read the instructions for use.



The markings are incomplete



The markings are OK

If the markings on the climbing carriage do not meet the requirements of the standard, the climbing carriage must be permanently removed from use.

2. Carabiner

- a. Check that the carabiner on the climbing carriage is the original one, it has a locking sleeve, and the carabiner hook lock is working properly.



Carabiner is not original



Carabiner is OK

If the carabiner is not the original one, the climbing carriage must be permanently removed from use. If there is uncertainty in the operation of the original carabiner, or if it is missing a locking sleeve, the climbing carriage must be sent for maintenance to Turvatikas Safety Ladder.

3. The condition of the spring of the wheels

- a. Check that both wheels are in the up position when the trolley is placed horizontally. Push the other wheel down and make sure that the other wheel does not lift up.



The wheels do not stay in their upper position with the help of spring force



Wheel spring is OK

If both wheels are not in their upper position, or if one wheel rises up when the other wheel is pushed down, the climbing carriage must be permanently removed from use.

4. Support plate of the Climbing Carriage

- a. Ensure, that there is a support plate in the middle of the bottom part of the Climbing Carriage.



Support plate is missing



Support plate is OK

If the support plate is missing, the climbing carriage must be permanently removed from use.

5. Bearings of the wheels

- a. Ensure, that the plastic sleeves in the trolley are not worn.



Plastic sleeves are worn



Plastic sleeves are OK

If the plastic sleeves are worn, the climbing carriage must be permanently removed from use.

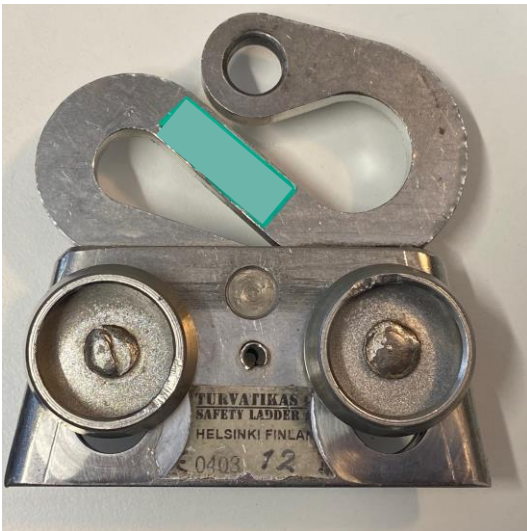
6. Fastening the wheels

- a. Ensure, that the wheels of the climbing carriage are firmly attached to their axles. Take a firm grip on both wheels on the same axle and spin them in opposite directions.

If the wheels are rotating with each other, the climbing carriage must be permanently removed from use.

7. Wear and tear on the frame of the climbing carriage

- a. Check that the wheels have not worn the frame of the climbing carriage, and there is no other noticeable wear and tear.



There is considerable wear on the frame

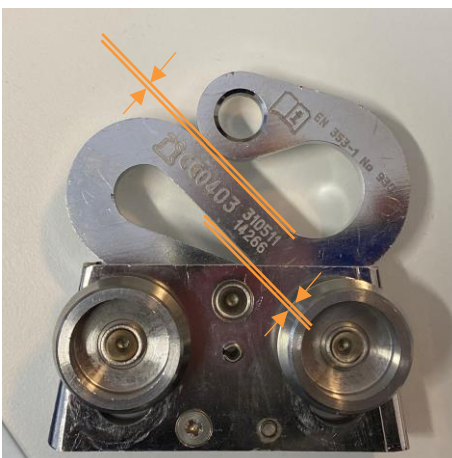


The frame is OK

If there is significant wear on the frame of the climbing carriage, it must be permanently removed from use.

8. Condition of the shock absorber

- a. Check that the gap between the different parts of the shock absorber is not more than 10 mm



If the gap in the shock absorber is more than 10 mm, the climbing carriage must be permanently removed from use.

b. Check that the shock absorber is not twisted or bent



Shock absorber is twisted

Shock absorber is OK

If the shock absorber is twisted or bent, the climbing carriage must be permanently removed from use.

Turvatikas Safety Ladder Climbing Carriage documentation

Documentation must be kept of all fall protection products.

Information required to be documented defined by the standard EN 365:2004+AC:2006 listed below:

- a) Product
- b) Model
- c) Manufacturer's name and contact information
- d) Serial number
- e) Year of manufacture
- f) Acquisition date
- g) First date of use
- h) Information of periodic inspections:**
 - 1. Date of periodic inspection
 - 2. Name and signature of the authorized person who performed the periodic inspection
 - 3. Due date of the next periodic inspection

NOTE!

It is the responsibility of the user organization to make the documentation, add the required information and store the documentation for future purposes.

